

# LEARNING THROUGH EXCURSIONS & CAMPS 2023

LEARNING PROGRAMS FOR EARLY, PRIMARY, SECONDARY, TERTIARY YEARS STUDENTS





**Sovereign Hill acknowledges the Wadawurrung people as the Traditional custodians of the land on which we operate. We pay our respects to their Elders past and present, and to all of the Aboriginal and Torres Strait Islander people who live and work on Wadawurrung Country. We acknowledge their unceded sovereignty over Wadawurrung Country, and the ongoing hardship and trauma as a result of colonisation. The history and continuous culture of the Wadawurrung people is an important part of our shared story.**

## **WELCOME**

The Sovereign Hill Museums Association's (SHMA) Learning Team is looking forward to collaborating with you to deliver engaging learning experiences in 2023. As a non-profit living museum we acquire, conserve, research, communicate and exhibit the tangible and intangible heritage for the purposes of education, study and enjoyment. Our mission is to provide meaningful immersive experiences that tell the stories of our humanity, by connecting people through history to adapt for a better future.

Our student experiences are stimulating, creative and connect across many areas of the curriculum, with a focus on 1850's gold rush heritage and the environment. Experiences can be indoors, outdoors, above ground or below ground, providing tremendous variety, ensuring a fun and action packed excursion or camp.

We deliver Victorian and Australian Curriculum linked learning programs that build knowledge and understanding that learners are curious to explore and inquire about. Using the expertise of staff across our sites; learners can gain insights that will support them to make meaning as global citizens. Schools are able to access enriching learning materials that are immersive, accessible and inclusive for all.

Each time you visit us you can learn something new as well as enjoying all your favourite experiences. Learning with us creates memories that stay with you to broaden and deepen your learning onsite, online and off-site.

When on-site the health and safety of our visitors and staff remains at the forefront of our operational decision making. We will advise you as it becomes known of any changes to your program availability or booking.

**SHMA is committed to being a child safe organisation where children and young people feel safe, respected, heard, valued and protected from harm. SHMA has a zero tolerance of child abuse, neglect and all forms of harm to children and young people.**

Please contact us to discuss all your program needs at [schoolbookings@sovereignhill.com.au](mailto:schoolbookings@sovereignhill.com.au)

**Sofia Fiusco**  
SHMA Head of Learning

---

## **CONTENTS**

3	Our Museum Sites
4-5	Learning in a Museum Setting
6-11	Sovereign Hill Outdoor Museum Learning Program Overview
12	Sovereign Hill School Costumed School 2 Day Experience
13-15	Museum Collections Object-Based Learning Program Overview
15	Australian War Memorial - Memorial Loan Box Program
16-21	Narmbool Learning Program Overview
23-24	Education Program & Camp Pricing
25	Outdoor Museum Suggested Itineraries
26	Education Program & Camp Enquiry Form

## OUR LEARNING PROGRAMS ARE DELIVERED ACROSS TWO MUSEUM SITES:



### OUTDOOR - LIVING MUSEUM

Covering 15 hectares of a former gold mining site, Sovereign Hill is an Australian tourism icon that brings the gold rushes to life through a living township with diggings, underground mines, costumed interpreters, coach rides and 1850s shops, trades, schools and dwellings. Situated in the historic city of Ballarat, the Outdoor Museum is located in Bradshaw Street, a comfortable 90-minute drive from Melbourne along the Western Highway.

#### EDUCATION FEATURES

- Education Officers facilitating learning to Early Years, Primary, Secondary and Tertiary aged students
- Access to learning program materials that enrich the Victorian and Australian Curricula
- Five Costumed Schools delivering programs for up to 300 students a week
- A museum collection of over 150,000 historical objects to be explored
- Camp accommodation for up to 250 visitors nightly
- Engaging learning experiences including rare trade demonstrations, mine tours, pantomime and AURA – an evening sound and light show

Interested in learning more visit

<https://sovereignhill.com.au/education-programs>



### NARMBOOL ENVIRONMENTAL & SUSTAINABILITY CAMP

Hidden away on a historic working farm just 90 minutes from Melbourne, 45 minutes from Geelong and 30 minutes from Ballarat, Narmbool is a tranquil 2,000 hectare property offering unique educational opportunities. Narmbool encompasses a number of significant ecosystems including pastures and grazing land, native bush and a variety of waterways. Sustainable farming is carefully balanced with environmental education, research and the enhancement of biodiversity through re-vegetation and habitat improvement.

#### EDUCATION FEATURES

- Education Officers facilitating day and camp programs for Early Years, Primary, Secondary and Tertiary aged students
- Access to learning program materials that enrich the Victorian and Australian Curricula
- Camp accommodation for up to 80 visitors in an environmentally designed and sustainable complex
- Engaging learning experiences can be tailored to include environmental science, sustainability, aboriginal education or leadership skills and knowledge into a fun and structured program.

Interested in learning more visit

<https://sovereignhill.com.au/narmbool-education>

### ENQUIRIES

E [schoolbookings@sovereignhill.com.au](mailto:schoolbookings@sovereignhill.com.au)

Visit [sovereignhill.com.au/excursion-booking](https://sovereignhill.com.au/excursion-booking)

#### KEEP IN TOUCH WITH US AT:

[sovereignhilledblog.com](https://sovereignhilledblog.com)



@GoldfieldsEd



@sovereignhilllearning

SOVEREIGN HILL EDUCATION IS SUPPORTED BY:

CECV

catholic education commission of victoria ltd

THE  
EDUCATION  
STATE

VICTORIA  
State  
Government

Education  
and Training



## LEARNING IN A MUSEUM SETTING

Museums are amazing places and spaces in which learners can make meaning and create connections to their life. Experiences within a museum create life long memories through the use of stories, play, objects and context.

### ACROSS OUR MUSEUMS STUDENTS CAN 'LEARN FROM THE PAST TO ADAPT TO A BETTER FUTURE'

Our ancestors have many lessons to teach us about managing ourselves in a changing world, developing a better world and responding to opportunity. Students can think about how we interact with others, connect to culture, build communities, care for the environment and respond to technological developments. Our immersive museums are the perfect places in which to explore, question, compare, predict, imagine and debate.

**Our Museums are filled with our tangible and intangible history to guide our inquiries.**

#### TANGIBLE HISTORY

Can be touched, is real and existed

- Historical Buildings & Places
- Heritage Sites & Objects
- Cultural Objects & Collections
- Artefacts & Crafts
- Fine Art
- Cultural Landscapes
- Environment
- Archaeological Evidence
- Geological Evidence
- Palaeontological Remains
- Sacred & Spiritual Places
- Living Community Sites

#### INTANGIBLE HISTORY

Cannot be touched, exists through connection to something else

- Language
- Oral History
- Traditional Arts & Crafts
- Customs & Beliefs
- Indigenous Knowledge Systems
- Rituals & Living Traditions
- Cultural Performances
- Skills & Techniques
- Belief Systems – Values & Behaviours
- Industrial Design
- Identity
- Social Groupings: friendship – family

**Connecting the past to the present supports learning across the Victorian and Australian Curriculum capabilities.**

**Areas to explore include:**

#### Critical & Creative Thinking

- Innovation & Enterprise
- Challenges: Environmental, Social, Economic
- Motivation & Adaptation

#### Intercultural

- Multi-culturalism
- Cultural Practice
- Cultural Diversity

#### Personal & Social

- Expression & Empathy
- Resilience
- Appreciation of Diversity
- Relationships

#### Ethical

- Principles & Debate
- Individual Values
- Societal: needs & norms
- Open-mindedness

## Inquiry Questions to Explore

What can the history of Victoria's gold rushes teach us about our present and possible future?

Does the past make us who we are today?

Was life better in the past?

Where is the past in the present?

Were we more sustainable in the past?

How do we see people adapt to the future through the past?



Was it harder for men or women on the goldfields?

Were people more resilient in the 1850s than they are now?

What creates a sense of belonging?

How do we govern ourselves?

What 1850's culture remains embedded in the 21st century?

Were the good old days really that good?



How and why do people seek homes in new places?

What's more precious than gold and has this changed from the 1850's to today?

How has our culture changed over time?

Why do people explore?

Does technology change lives for the better?

What is the greatest innovation of the 19th Century?



Whose history is it?

How do we know if we weren't there?

What should stay in the past?

How does our intangible history connect to the future?

How do we measure change?

How can we create a better future?



Within our museums students can undertake inquiry focused investigations and/or problem-solving. They can start with a range of scenarios, questions and problems to navigate and explore, or students can design their own. Inquiry-based learning prioritises experiences that require critical and creative thinking, allows students to develop their abilities to ask questions, design investigations, interpret evidence, form explanations and arguments, and communicate findings.

# SOVEREIGN HILL LEARNING



- 1 ENTRANCE BUILDING (Day visit schools arrival)
- 2 BRIGHT VISIONS THEATRETTE
- 3 GOVERNMENT CAMP
- 4 CHINESE CAMP
- 5 CHINESE TEMPLE
- 6 RED HILL MINE
- 7 GOLDFIELDS - WATERLOO STORE
- 8 GOLD PANNING
- 9 BLACKSMITH
- 10 CARVER & DALTON AUCTION ROOMS
- 11 HOPE BAKERY
- 12 PHOTOGRAPHIC ROOMS
- 13 BALLARAT TIMES - PRINTER
- 14 SWEET SHOP - CONFECTIONER
- 15 GROCER
- 16 POST OFFICE
- 17 JEWELLER
- 18 CAFE & PLAY SPACE
- 20 NEW YORK BAKERY
- 21 APOTHECARY HALL
- 22 SADDLERY
- 23 UNIVERSAL TRANSIT OFFICE
- 24 CHARLIE NAPIER HOTEL
- 25 SCHOOL ACCESS GATE
- 26 VICTORIA THEATRE / UNITED STATES HOTEL
- 27 CONFECTIONERY FACTORY
- 28 GOLD POUR
- 29 EDUCATION CENTRE
- 30 ST ALIPIUS DIGGINGS SCHOOL
- 31 CRITERION DRAPERY STORE
- 32 HORSE BAZAAR - COACH RIDES
- 33 TINSMITHS
- 34 PARADE SHOWGROUND
- 35 QUARTZ MINE - MINE TOURS
- 36 ENGINE HOUSE
- 37 CANDLE WORKS
- 39 RAGGED SCHOOL
- 40 BOWLING SALOON & FIRE STATION
- 41 JOHN ALLOO'S
- 42 CAMP ACCOMMODATION & CHECK-IN (Sovereign Hill Hotel)
- 43 RED HILL NATIONAL SCHOOL
- 44 WHEELWRIGHT & COACHBUILDER
- 45 ST PETER'S DENOMINATIONAL SCHOOL
- 46 GIFT SHOP - Carpark
- 48 R GIBBINGS, LIVERY & BAIT STABLES
- 50 WESLEYAN DAY SCHOOL
- 51 COSTUMED SCHOOLS ARRIVAL
- 52 SPEEDWELL STREET
- 65 ALEX KELLY STABLES
- 66 BANK / GOLD OFFICE

## DIGITAL TOURS

### Hidden Histories - The Wadawurrung people

A digital tour that brings to life the perspectives and participation of Aboriginal people on the Ballarat goldfields from 1851-1871.

[sovereignhillhiddenhistories.com.au](http://sovereignhillhiddenhistories.com.au)

We acknowledge the traditional Aboriginal custodians of the land upon which Sovereign Hill and Narmbool sit, the Wadawurrung, and their ongoing connection to this land and pay respect to their culture and their Elders past, present and future.

## VISITOR SERVICES

- Information
- First Aid Kit
- Food & Drink

- Toilets
- Water Tap
- Disability Toilet

- Parenting Room
- Lockers
- Gift Shop

- Emergency Evacuation Point
- Suggested Stroller & Wheelchair Route
- Ramps

## LIVING MUSEUM LEARNING PROGRAM OVERVIEW

Our museum provides a range of innovative, 'hands-on' learning experiences for students from Foundation through to Tertiary levels. There are many ways for schools to create engaging learning experiences in the museum. Schools can be self-guided, undertake a program or stay for several days to:

- Explore our exhibits which include diverse cottages, shops and industries.
- Incorporate activities and demonstrations such as the Gold Pour, Candlemakers, Confectionary, Mine Tours, gold panning and AURA within your itinerary.
- Undertake a specialised learning program mapped to the Victorian and Australian Curriculum and utilise our inquiry, pre and post and self-guided learning materials.

## LEARNING PROGRAMS OVERVIEW

### Foundation – Level 2

<p><b>Then &amp; Now *</b> (50 mins)</p> <p>Students connect, compare and contrast the differences between childhood now and in the 1850s.</p> <p><b>Victorian Curriculum Links</b></p> <ul style="list-style-type: none"><li>• History</li><li>• Personal &amp; Social Capability</li><li>• Critical &amp; Creative Thinking</li></ul>	<p><b>Creating a City</b> (50 mins)</p> <p>Students explore the museum as a backdrop to understanding what makes the geographic and civic city elements.</p> <p><b>Victorian Curriculum Links</b></p> <ul style="list-style-type: none"><li>• Geography</li><li>• History</li><li>• Civics &amp; Citizenship</li></ul>	<p><b>Exploring the Collection</b> (50 mins)</p> <p>Students explore primary sources to understand the significance of places and objects to chronological storytelling.</p> <p><b>Victorian Curriculum Links</b></p> <ul style="list-style-type: none"><li>• History</li><li>• Personal &amp; Social Capability</li><li>• Critical &amp; Creative Thinking</li></ul>
---	--	---

### Level 3 - 4

<p><b>Living in the Past</b> (50 mins)</p> <p>Students use primary sources to explore aspects of daily life of people living through Victoria's 19th century gold rushes.</p> <p><b>Victorian Curriculum Links</b></p> <ul style="list-style-type: none"><li>• History</li><li>• Geography</li><li>• Personal &amp; Social Capability</li><li>• Critical &amp; Creative Thinking</li></ul>	<p><b>Gold Rush Immigration *</b> (50 mins)</p> <p>Students become history detectives to investigate the stories of goldrush migrants.</p> <p><b>Victorian Curriculum Links</b></p> <ul style="list-style-type: none"><li>• History</li><li>• Civics &amp; Citizenship</li><li>• Personal &amp; Social Capability</li><li>• Critical &amp; Creative Thinking</li></ul>	<p><b>Goldfields STEM *</b> (50 mins)</p> <p>Students explore simple machines and technologies of the past to understand, design and innovate using SCAMPER.</p> <p><b>Victorian Curriculum Links</b></p> <ul style="list-style-type: none"><li>• History</li><li>• Technology</li><li>• Personal &amp; Social Capability</li><li>• Critical &amp; Creative Thinking</li></ul>
--	--	--

### Level 5 – 6

<p><b>Gold Fever *</b> (50 mins)</p> <p>Students join the 'rush' to One Eye Gully to role-play the experiences of the miners, gold buyers and troopers to understand the highs and lows that led to the Eureka Rebellion in 1854.</p> <p><b>Victorian Curriculum Links</b></p> <ul style="list-style-type: none"><li>• History</li><li>• Civics &amp; Citizenship</li><li>• Personal &amp; Social Capability</li><li>• Critical &amp; Creative Thinking</li></ul>	<p><b>Chinese People on the Goldfields + *</b> (50 mins)</p> <p>Students explore aspects of 19th century Chinese experiences and discuss the discrimination faced by the Chinese migrants who came to Victoria.</p> <p><b>Victorian Curriculum Links</b></p> <ul style="list-style-type: none"><li>• History</li><li>• Ethical</li><li>• Personal &amp; Social Capability</li><li>• Critical &amp; Creative Thinking</li></ul>	<p><b>Put Yourself in the Eureka Story</b> (50 mins)</p> <p>Students re-create scenes of the key events of the Eureka Rebellion to learn about its significant impact on developing a colony.</p> <p><b>Victorian Curriculum Links</b></p> <ul style="list-style-type: none"><li>• History</li><li>• Civics &amp; Citizenship</li><li>• Personal &amp; Social Capability</li><li>• Critical &amp; Creative Thinking</li></ul>
---	--	---

+ Cross Curriculum Learning Priorities about Asia and Australia's engagement with Asia

\* Complimentary learning program self-guided tour available

## Level 5 – 6

### **Aboriginal People and the Goldfields \*** (50 mins)

Students explore the impacts of 19th century European colonisation on Ballarat's Aboriginal people. This program includes a walking tour.

#### **Victorian Curriculum Links**

- History
- Geography
- Personal Social, Ethical & Intercultural Capabilities

### **Goldrush Immigration \*** (50 mins)

Students become history detectives to investigate the stories of goldrush migrants.

#### **Victorian Curriculum Links**

- History
- Civics & Citizenship
- Personal & Social Capability
- Critical & Creative Thinking

### **Living in the Past – a changing society \*** (50 mins)

Students explore living in the past to explain the causes and effects of change on a developing society and the impact that it had on the people.

#### **Victorian Curriculum Links**

- History
- Personal & Social Capability
- Ethical Capability
- Intercultural Capability

## Level 3 – 6

### **Goldfields STEM Challenge** (2 hours – Monday Only - \$15 per student)

Students explore simple machines and technologies of yesteryear to inform, plan and innovate a solution to an engineering problem unique to the museum.

#### **Victorian Curriculum Links**

- History
- Technology
- Personal & Social Capability
- Critical & Creative Thinking

### **School Life Then & Now** (3 hrs – Monday Only - \$19 per student inc. writing book)

Students are immersed in an 1850's school, undertaking mini-lessons to experience and compare then to now so as to inform their understanding of how colonial life influenced a changing society.

#### **Victorian Curriculum Links**

- History
- Personal & Social Capability
- Ethical Capability
- Intercultural Capability

### **Welcome to the Goldfields** (50 mins)

Students are guided on a walking tour of the museum, to understand the narrative of the Ballarat goldfields and its people, to enrich their knowledge of Australia's colonial past, from 1851 to the late 19th Century.

#### **Victorian Curriculum Links**

- History
- Technology
- Personal & Social Capability
- Intercultural Capability

## Level 7 – 8

### **We Built this City on Rock n Gold #** (90 mins - \$9 per person)

Students examine the geological features that caused gold to be present in extractable quantities in Ballarat and explore the impact of water on the formation and extraction of gold. Underground mine tour included.

#### **Victorian Curriculum Links**

- Science
- Geography
- History
- Sustainability

### **Environmental Impacts of Colonisation & Gold #^** (50 mins)

Students investigate how Victoria's environment was changed in the 19th century and what this meant for the lifestyles of the first inhabitants and new migrants.

This program includes a walking tour.

#### **Victorian Curriculum Links**

- History
- Geography
- Ethical Capability

### **Dilemma Based Learning** (90 mins \$7.50 per student plus \$100 ACL)

Students are immersed in a scenario of the past, the Anti-Chinese League, to analyse choices people made given the conditions of time, connect to the present and future state, or explore contested histories.

#### **Victorian Curriculum Links**

- History
- Civics & Citizenship
- Personal & Social Capability
- Ethical Capability
- Critical & Creative Thinking

## Level 9 – 10

<p><b>Australia and Asia: Aboriginal People #</b> (50 mins)</p> <p>Students explore the impacts of 19th century European colonisation on Ballarat's people.</p> <p><b>Victorian Curriculum Links</b></p> <ul style="list-style-type: none"><li>• History</li><li>• Geography</li><li>• Personal &amp; Social Capability</li><li>• Ethical Capability</li><li>• Intercultural Capability</li></ul>	<p><b>Environmental Impacts of Colonisation and Gold #^</b> (50 mins)</p> <p>Students investigate how Victoria's environment was changed in the 19th century and what this meant for the lifestyles of the first inhabitants and new migrants.</p> <p>This program includes a walking tour.</p> <p><b>Victorian Curriculum Links</b></p> <ul style="list-style-type: none"><li>• History</li><li>• Geography</li><li>• Ethical Capability</li></ul>	<p><b>Dilemma Based Learning</b> (90 mins \$7.50 per student plus \$100 ACL)</p> <p>Students are immersed in a scenario of the past, the Anti-Chinese League, to analyse choices people made given the conditions of time, connect to the present and future state, or explore contested histories.</p> <p><b>Victorian Curriculum Links</b></p> <ul style="list-style-type: none"><li>• History</li><li>• Civics &amp; Citizenship</li><li>• Personal &amp; Social Capability</li><li>• Ethical Capability</li><li>• Critical &amp; Creative Thinking</li></ul>
<p><b>The Industrial Revolution in Australia</b> (50 mins)</p> <p>Students experience the Museum's collection to explore the the impact of the Industrial Revolution on living and working conditions in Australia.</p> <p>This program includes a walking tour.</p> <p><b>Victorian Curriculum Links</b></p> <ul style="list-style-type: none"><li>• History</li><li>• Geography</li><li>• Economics &amp; Business</li><li>• Technologies</li></ul>	<p><b>Australia and Asia: Chinese Migrants +</b> (50 mins)</p> <p>Students analyse the experiences of Chinese migrants to Victoria and discuss the decision making they faced in the lead-up to Federation.</p> <p><b>Victorian Curriculum Links</b></p> <ul style="list-style-type: none"><li>• History</li><li>• Ethical Capability</li><li>• Intercultural Capability</li></ul>	

# Cross Curriculum Learning about Aboriginal and Torres Strait Islander histories and cultures

^ Cross Curriculum Priorities Learning about Sustainability

+ Cross Curriculum Priority Learning about Asia and Australia's engagement with Asia

\* Complimentary learning program self-guided tour available

## VCE Learning Programs

<p><b>VCE Health and Human Development Masterclass</b> (90 mins)</p> <p>Students will explore Ballarat goldrush conditions, our medical collections, and more broadly nineteenth century living conditions and how public health systems and wellbeing ideas have evolved into the systems we find today.</p> <p><b>VCAA Study Design Links</b></p> <p><b>Unit 3:</b> Australia's health in a globalised world</p> <p><b>Area of Study 2:</b> Promoting health and wellbeing</p> <p><b>VET Allied Health</b></p>	<p><b>VCE Business Management Masterclass</b> (90 mins)</p> <p>Students investigate Sovereign Hill as a not-for-profit business case study to describe how and why business ideas are created and developed through the nurturing of a culture of business innovation and entrepreneurship.</p> <p><b>VCAA Study Design Links</b></p> <p><b>Unit 1:</b> Planning a business</p> <p><b>Area of Study 1:</b> The business idea</p> <p><b>Area of Study of 3:</b> Internal Environment</p> <p><b>Unit 4</b></p> <p><b>Area of Study 2:</b> Implementing Change</p>
<p><b>VCE Geography Masterclass</b> (90 mins)</p> <p>Students explore Sovereign Hill as a tourism case study, looking at the socio-cultural value of the outdoor museum and its economic and environmental sustainability. A tour to identify Sovereign Hill's environmental management practices enables students to collect information and photographic data for their fieldwork component, including GIS.</p> <p><b>VCAA Study Design Links</b></p> <p><b>Unit 2:</b> Tourism</p> <p><b>Area of Study 1:</b> The Characteristics of Tourism</p> <p><b>Area of Study 2:</b> The Impacts of Tourism</p>	<p><b>VCE Australian History Masterclass</b> (90 mins)</p> <p>Students explore the broad theme of 'Continuity and Change' using nineteenth century Ballarat as a case study. Topics include the impacts of colonisation, understanding belonging and citizenship, and the impact of power and resistance. Students analyse the foundations of continuity and change in the developing colony and examine the contributions of significant events, ideas and perspectives.</p> <p><b>VCCA Study Design Links</b></p> <p><b>Outcome 1:</b> Big Ideas</p> <ul style="list-style-type: none"> <li>- From Custodianship to the Anthropocene (impact of gold)</li> <li>- Creating a Nation (immigration and Chinese migration to the goldfields)</li> <li>- Power and Resistance (political ferment on the goldfields - Eureka Rebellion)</li> </ul>

### **VCE Outdoor and Environmental Studies Masterclass (90 mins)**

Students learn about Australia's natural environment and investigate the way it has been manipulated over time. Topics include traditional Aboriginal land, European settlement through squatters, the quest for gold, and impact on our natural environment and its unique flora and fauna. Students then explore the impacts of these dramatic changes through a guided tour of Sovereign Hill featuring exhibits that reveal how quickly Ballarat's landscapes and ecosystems were transformed.

#### **VCAA Study Design Links**

**Unit 3:** Relationships with Outdoor Environments

**Area of Study 1:** Historical Relationships with Outdoor Environments

### **Applied Learning - Occupational Health and Safety Masterclass (60mins)**

Students explore Sovereign Hill as a case study to compare and contrast safety on the goldfields within a contemporary workplace, develop their OHS awareness and understanding. Sovereign Hill also introduces students to other skills that are important in a contemporary workplace.

#### **VCAA Study Design Links**

**Victorian Pathways Certificate (VPC)**

**VET Specific Industry OHS units**

### **Tertiary Learning Program Overview:**

We support the education and development of tertiary students by providing a range of learning experiences that connect to either the development of skills or knowledge and understanding. We are pleased to work with Universities and TAFE's to design a program that meets the needs of your students.

**Programs can be designed for Education, Pre-service teachers, Early Years, Research, Health, Arts, Humanities, Museum, Cultural Studies and Science.**

**Self-guided tours** are designed to complement learning programs or for schools self-managing their experience on-site.

Visit <https://sovereignhill.com.au/education-sessions> to learn more.

**Social Scripts** designed to support students visiting our Living Museum.

Visit <https://sovereignhill.com.au/social-stories> for further details.





### Gold Mine Tours (45 mins)

#### THE SECRET CHAMBER

Level 3 - 4

**Focus** Community and First Contacts

The inspiring story of two Chinese brothers who sought their fortune in Victoria's New Gold Mountain.

#### LABYRINTH OF GOLD

Level 5 - 6

**Focus** From Colony to Nation

An underground journey to discover the working life of Ballarat's early miners.

#### TRAPPED

Level 9 - 10

**Focus** The Making of the Modern World and Australia

The story of the 1882 disaster that struck in the New Australasian No. 2 Mine at Creswick.

### Evening Program

#### AURA - SOUND-AND-LIGHT SHOW (90 mins)

AURA is a multi-sensory sound-and-light show presenting the story of gold in all its wondrous forms. The atmospheric storytelling covers 64 acres, with hundreds of stunning projections to create an immersive storytelling experience that transports you back in time. The Wadawurrung creation story is told with projections on a magnificent lake, gunfights and protests erupt under the night sky, and the gold rush is brought to life as never before. You will feel the vibrations as stars explode in front of your eyes, watch as the land is transformed by the gold rush, and dive into the chaos of the Eureka Rebellion as you witness the creation and discovery of the world's most precious metal.

#### Victorian Curriculum Links

- History
- Media Arts
- English: Reading & Viewing

**Sovereign Hill was grateful for the opportunity to work with Uncle Jack Charles as part of our AURA show. Uncle Jack was a proud Boon Wurrung, Dja Dja Wurrung, Woiwurrung and Yorta Yorta senior Elder. He was a storyteller, an activist and much more. You will hear and see Uncle Jack in our AURA introduction and Welcome to Country and his family have given their permission for us to continue to use his name and images. May he be greeted by his Ancestors on his return home.**

#### THEATRE PERFORMANCE (45 mins)

Students will enjoy participating as an audience member in an interactive theatre piece performed for entertainment. Interpretive theatre is a key element for our living museum. Students will experience the theatre and key drama skills as performers shape characters, use voice and movement in improvisation and play-build performances of devised and scripted drama for them

#### Victorian Curriculum Links

- History
- Drama

\* Available to school groups who have booked the sound-and-light show and are staying more than 1 night at camp, minimum numbers required



## SOVEREIGN HILL COSTUMED SCHOOL - 2 DAY EXPERIENCE

Sovereign Hill School offers a unique two day, fully immersive, costumed school experience tailored to Year 5 and 6 students. As part of this program, students are in the charge of 'Ma'am' or 'Sir' who is strict, all knowing and the embodiment of 1850's Victorian authority. Role play is central to the success of the program, essentially once costumed, the student becomes a living exhibit in the Sovereign Hill Outdoor Museum.

### Students will:

- Experience colonial school life in one of the museum's five schools: Red Hill National School, St Peter's Denominational School, Ballarat Benevolent Asylum Ragged School, St Alipius Diggings School or Wesleyan Day School
- Role play being a child of the 1850s at school on the goldfields, abiding by the behavioural expectations of the era
- Be exposed to fascinating insights into the distinct social norms and hierarchy of the times.
- Have the rare opportunity to go behind the scenes of many Sovereign Hill businesses and experience first-hand, the tough and turbulent times of life on the diggings.

### Victorian Curriculum Links Level 5 & 6

- History
- Personal & Social Capabilities
- Critical & Creative Thinking
- Ethical Capability
- Drama

### Bookings

To make a booking, schools must be on the Sovereign Hill Schools mailing list. To be placed on the list please email [sovereign.hill.sch@education.vic.gov.au](mailto:sovereign.hill.sch@education.vic.gov.au) with the following information:

- **School name and address**
- **School email address and phone number**
- **School contact person: name and email address**

The Costumed School program is in high demand. Bookings open each year in Term 1 for the subsequent year. For example, bookings for 2024 programs will open on 27 January 2023. All schools on the mailing list will be invited to apply for bookings from the opening date each year.

The maximum number of students per costumed school is limited to 30. For more information on the Costumed School School 2 Day Experience visit: <https://sovereignhill.com.au/costumed-school>



## MUSEUM COLLECTIONS OBJECT-BASED LEARNING (OBL) PROGRAM OVERVIEW

The Australian Centre for Goldrush Collections and Research, provides access to material not on public display. Our programs integrate authentic or replica objects into the learning environment to create connections between the past, present, future, place, space and shine a light on how we lived. OBL allows learners to observe, research and interpret from our collections of over 150,000 objects. Inquiry-based learning encourages students to:

- Reflect on sustainability and sustainable design
- Explore the choices people have made to adapt and thrive in environments
- Engage in hands-on learning with artefacts to encourage critical and creative thinking

### LEARNING PROGRAMS OVERVIEW

#### Foundation - Level 4

##### **Collection CloseUp: Ballarat Stories** (50 mins.)

Students explore important places, spaces, or events that have changed over time in Ballarat

##### **Victorian Curriculum Links**

- History
- Intercultural Capability

**Living Museum Program Link:** Creating A City

#### Level 3 - 4

##### **Collection CloseUp: Picturing the Past** (50 mins)

Students explore change over time and the importance of photographs in how we remember and commemorate the past through a close up look at our collection of historic cameras and an exploration of a variety of historic photographs of the Ballarat community.

##### **Victorian Curriculum Links**

- History
- Personal & Social Capability

**Living Museum Program Link:** Living in the Past

## Level 5 - 6

### **Collection CloseUp: The Eureka Collection** (50 mins)

Students are exposed to a wide variety of objects (clothing, paintings, furniture, rare books, etc) relating to the story of the Eureka rebellion and practice good historical questioning to look at what information each source provides.

#### **Victorian Curriculum Links**

- History
- Civic & Citizenship
- Critical & Creative Thinking
- Ethical Capability
- Visual Arts

**Living Museum Program Link:** Put Yourself in the Eureka Story

## Level 7 - 8

### **Collection CloseUp: The Pern Collection #** (50 mins)

Students meet The Pern Collection, an eclectic mix of over 1000 artefacts sourced from around the globe, by Dr Sydney Pern. It includes examples of some of the oldest known stone artefacts in the world as well as wooden objects, basketry and taxidermy animals and represents a typical gentleman collector's collection. This program introduces students broadly to the type of cultural heritage material relating to Aboriginal and Torres Strait Islander communities, the historical information these objects represent and the physical and ethical challenges of appropriately caring for and sharing this material.

#### **Victorian Curriculum Links**

- History
- Critical & Creative Thinking
- Ethical Capability
- Intercultural Capability
- Personal & Social Capability

## Level 7 - 10 / VCE

### **Collection CloseUp: Is it real?** (50 mins)

Students will explore the collection to develop their general historical thinking skills in a hands-on workshop investigating is it real or fake and questioning how do we know?

#### **Victorian Curriculum Links**

- History
- Ethical Capability
- Critical & Creative Thinking Capability
- VCE History

## Level 9 - 10

### **Collection CloseUp: The Chinese Collection +** (50 mins)

Students learn about one of the world's oldest collections of Chinese processional objects, including Loong the dragon, discover the extensive collection of missionaries George and Robina Arnott-Rogers and explore questions of migration and cultural exchange between China and Australia in the period 1850-1918.

#### **Victorian Curriculum Links**

- History
- Critical & Creative Thinking
- Ethical Capability
- Intercultural Capability
- Personal & Social Capability

**Living Museum Program Link:** Australia and Asia: Chinese Migrants

# Cross Curriculum Learning about Aboriginal and Torres Strait Islander histories and cultures

+ Cross Curriculum Priority Learning about Asia and Australia's engagement with Asia

**VCE The Arnott-Rogers Collection and Chinese Processional Collection Masterclass (90 mins)**

Students explore the collection of missionaries George and Robina Arnott-Rogers, collected between 1895 and 1916 in Sichuan province. The collection provides an incredible window into life in rural China in a period of great change. China Inland Mission organisation (CIM); CIM required their missionaries to live as much as possible like the people to whom they were ministering. Many of the textiles in the collection were worn or used in the household by the family. Robina ran a nursing station and was a skilled and trusted nurse/doctor/surgeon/dentist and midwife; her daily diaries, letters, photographs and the artefacts they collected. This collection is supplemented by a look at the Processional Collection that provides some insight into contemporary Chinese culture in Ballarat both as an example of what has been lost in the Cultural Revolution in China and how Chinese culture may have evolved differently in the Chinese diaspora.

**VCAA Study Design Links**

**History Unit 3 & 4:** Revolutions

**Area of Study 1 and 2**

- Causes and Consequences of revolution (China)

## **AUSTRALIAN WAR MEMORIAL – MEMORIAL BOX LOAN PROGRAM (PRIMARY, SECONDARY OR COMMUNITY)**

As the Victorian agent for the Australian War Memorial's Memorial Box program we can provide schools or community groups with access to Memorial Boxes that are an engaging and interactive thematic learning resource. Each box is filled with real and replica uniforms, equipment, artefacts that share the stories of Australian servicemen and servicewomen.

### **Box 1 Australians in the First World War**

This Memorial Box is filled with real and replica uniforms, equipment and artefacts from the First World War. It includes objects that explore the Anzac experience, as well as the contribution of Australian sailors, airmen, nurses, and those at home during a defining period in our nation's history.

### **Box 2 Australia in Wartime and Peacekeeping Operations since 1946**

This Memorial Box includes real and replica items relating to Australian experiences in wartime and peacekeeping since the end of the Second World War. Through objects, images, and online resources, students can explore Australia's involvement in places such as Korea, Vietnam, East Timor, Bougainville, and Afghanistan.

### **Box 4 Australia in the Second World War**

This Memorial Box explores the Australian experience of the Second World War - the war that seemed to affect every aspect of life as Australia itself came under attack. Almost a million Australians served at home and abroad; on land, at sea, or in the air. Their stories come to life as you unpack the real and replica Second World War items in this Box.

Boxes are free to loan apart from the cost of delivery of the boxes to and from organisations and are available in 2 week loan periods, including shipping time. Organisations are responsible for organising the pick-up and return. On-site pick-up is available Monday - Friday. Booking periods may be flexible depending on demand.

For additional Memorial Box Resources visit <https://www.awm.gov.au/learn/memorial-boxes>



# NARMBOOL ENVIRONMENTAL EDUCATION



## NARMBOOL LEARNING PROGRAM OVERVIEW

Owned and operated by Sovereign Hill, Narmbool exemplifies sustainable farming within a diverse and fragile ecosystem. Narmbool, once famous for its high quality Merino wool, is now renowned for its prime lamb production, bushland revegetation and conservation of the Williamsons Creek as habitat for native wildlife and flora. When at Narmbool students are nurtured by nature and make connections between our sustainable practices on-site and during the delivery of our education programs which enrich and expand their understandings of:

- our natural environment
- historic and current land uses
- monitoring, protecting and increasing our biodiversity
- conserving natural resources

Our property includes significant ecosystems such as pastures and grazing land, native bush and a variety of waterways. The idyllic property is the perfect space in which to develop teams and build relationships. Our Narmbool Education Officers will design a day or camp program comprised of a series of workshops supported by a focus of your choosing.

To learn more about learning programs visit <https://sovereignhill.com.au/narmbool-education-activities>

THEMES	VICTORIAN CURRICULUM LINKS								
	Health & PE	History	Geography	Science	Maths	Critical & Creative Thinking	Ethics	Intercultural	Personal & Social
<b>Biodiversity:</b> Students explore Narmbool to develop their understanding of living and non-living things in an ecosystem.			•	•	•	•			
<b>Environmental Impact:</b> Students explore the places and spaces of Narmbool to develop their understanding of the impacts of human activities on our ecosystems.	•	•	•	•					•
<b>Sustainability:</b> Exploring Narmbool, students expand their knowledge of sustainability in action to develop practices that support and maintain human life and care for our environment.		•	•	•		•	•		•
<b>Water:</b> Students undertake fieldwork to investigate water quality and the importance of aquatic life in our ecosystem.			•	•	•	•	•		
<b>Citizen Science - Research:</b> Citizen science is public participation in scientific research, monitoring in action and research to increase our understanding of science.			•	•	•	•	•		•
<b>Aboriginal History:</b> Exploring the historic sites of Narmbool students learn about the uniqueness and wisdom of Aboriginal history.	•	•	•				•	•	•
<b>Teambuilding:</b> Students work effectively in teams, developing strategies and relationships whilst managing challenging situations constructively and respectfully.	•					•			•

Cross Curriculum Priorities Learning about Sustainability integrated across all program designs

Programs can be themed to a particular focus or, can include a variety of activities from different themes. Programs and activities can be adapted to suit the requirements of various age groups or outcomes.

## LEARNING PROGRAMS OVERVIEW

### **The Narmbool Challenge** (60-90 minutes)

Students familiarise themselves with the camp layout while completing tasks centred on the education themes of the program.

#### **Victorian Curriculum Links**

- Critical & Creative thinking
- Personal & Social Capabilities
- The Humanities

### **Team Building Games** (60 minutes)

Students are challenged to work as a team, to build trust, break down barriers and effectively communicate within the group to complete challenges.

#### **Victorian Curriculum Links**

- Health & Physical Education
- Critical & Creative thinking
- Personal & Social Capabilities

### **Bushwalk** (3-5 hours)

**Short walk** to Mannas Field Centre: 2.2km. **Long walk** to Tea Tree Gully Bush Camp: 5-6km

Students are immersed in the environment and history of the waterways and bushland, navigating our network of walking trails across the property.

#### **Victorian Curriculum Links**

- Health & Physical Education
- Personal & Social Capabilities
- The Humanities

### **Aquatic Invertebrate Sampling** (60-90 minutes)

Student work in small teams to collect water samples and apply variety of resources, techniques and scientific reasoning to identify living organisms and determine the health of the water.

#### **Victorian Curriculum Links**

- Science
- The Humanities
- Critical and Creative thinking

### **Shelter Building** (60-75mins)

Students work in small teams to create a shelter using only what is available to them in their environment. The shelter must be big enough to fit the whole team and be waterproof!

#### **Victorian Curriculum Links**

- Science
- Technology

### **Water and/or Soil testing** (90-120 minutes)

Students evaluate the health and quality of water and/or soil at Narmbool using a variety of tools and scientific tests such as salinity, temperature, turbidity, pH, colour and texture.

#### **Victorian Curriculum Links**

- Science
- The Humanities
- Critical and Creative thinking

### **Create a Critter** (45-75 minutes)

Students discuss and experience ecosystems, habitats and food webs and use this knowledge to create their own artistic "critters" that can survive and thrive at Narmbool.

#### **Victorian Curriculum Links**

- The Arts
- Critical & Creative thinking
- Science

### **Narmbool Critter Hunt** (90-120 minutes)

Students follow clues and use navigation skills and teamwork to find hidden critters in their different habitats at Narmbool.

This activity builds on the learning from 'Create a Critter'.

#### **Victorian Curriculum Links**

- The Humanities
- Critical & Creative thinking
- Personal & Social Capabilities

### **Scats and Skulls** (30-60 minutes)

Students use prior and introduced knowledge about physical and behavioural adaptations, along with scientific clues, to identify various native and introduced species found at Narmbool.

#### **Victorian Curriculum Links**

- The Humanities
- Critical & Creative thinking
- Personal & Social Capabilities

### **Wonderful World of Worms** (60-75mins)

Students explore Narmbool's worm farm and learn about the important role that worms have in our ecosystem. Students will explore the observable features of worms and how these features help them to do their job and survive underground.

#### **Victorian Curriculum Links**

- Science
- Sustainability



#### **Homestead Gardens Tour** (30-60 minutes)

Students explore the beautiful gardens of the historic Narmbool homestead and discover why gardens are so important. They make connections to Narmbool's geology and history of human habitation from Wadawurrung to European settlement, before connecting people and place to the changing the environment.

##### **Victorian Curriculum Links**

- The Humanities
- Intercultural Capability
- Health & Physical Education
- Critical & Creative thinking

#### **Woolshed tour** (30-60 minutes)

Students learn about the integral part sheep have played at Narmbool since 1839 by visiting the woolshed, the heartbeat of today's successful commercial operations. Students interact with the space, with farm staff and, depending on the season, see critical farm operations in action.

##### **Victorian Curriculum Links**

- The Humanities
- Technologies

#### **Stables Tour** (30-60 minutes)

Students learn how horses have been a crucial part of farming and breeding operations at Narmbool since the arrival of Europeans. Students are engaged through both static and interactive displays as they explore the different buildings of the stables complex and see the changing nature of farming over the passage of time.

##### **Victorian Curriculum Links**

- The Humanities
- Technologies

#### **Aboriginal Painting & Puzzle** (30-45 minutes)

Students explore the artistic representations and meanings associated with a depiction of the Narmbool landscape in a painting by a former Narmbool Aboriginal Education Officer.

##### **Victorian Curriculum Links**

- Intercultural Capability
- The Humanities
- Ethical Capability
- The Arts
- Critical & Creative thinking

#### **Aboriginal Games** (60-90 minutes)

Students participate in a fun and engaging session to discover how games were used to teach Aboriginal children skills required for their roles and responsibilities within community.

##### **Victorian Curriculum Links**

- Intercultural Capability
- The Humanities
- Health & Physical Education
- Personal & Social Capabilities

#### **Predator Prey Game** (60-90mins)

Students participate in a game where they are given the role of different animals and they have to complete certain tasks in order to survive. This game teaches students about the relationships between different animals and plants in a food chain and the importance of biodiversity within an particular environment.

##### **Victorian Curriculum Links**

- Intercultural Capability
- The Humanities
- Ethical Capabilities

**Activities listed below are available on request or built into programs where appropriate.**

- Indigenous Garden discovery
- Garden Challenge
- Mindfulness and reflection
- Fieldwork: Transects and Quadrats (higher secondary)
- Tent Camping at Tea Tree Gully bush camp (subject to fire season & ratings)
- Tree Planting

**Alternatively, other activities can be developed to suit your particular curriculum focus and/or needs.**

**Optional Activities offered by External Providers at Narmbool include:**

**Aboriginal Education and Cultural session with Aboriginal Educator Emma Leehane (60 mins)**

In this hands on activity, Emma provides an insight into Aboriginal culture using artefacts such as tools and weapons to paint a picture of how Aboriginal people lived sustainably for tens of thousands of years. She explores the students' understanding of contemporary views of Aboriginal people and their recent and past history and culture. This activity can also be tailored to meet the specific needs of your students.

**COST: \$200 per hour**

**Birds of Prey presentations by Martin Scuffins from Leigh Valley Hawk and Owl Sanctuary**

*Martin's sessions all involve live bird interaction.*

**Meet the Beaks (Day)**  
(60 mins)

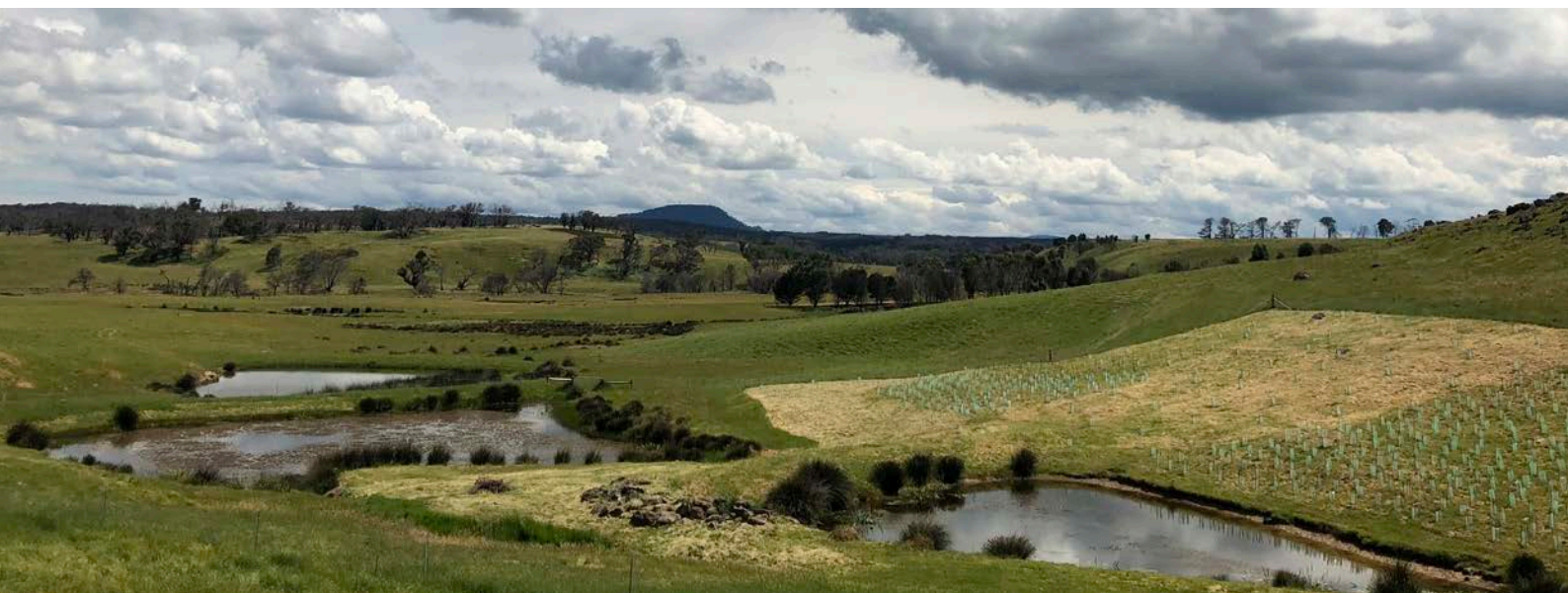
Students learn about the threats faced by birds of prey and how we can help them to survive.

**COST: \$240**

**Those Outstanding Owls (Day or Night)** (60 mins)

Students meet 1-2 owls from the Leigh Valley Hawk and Owl Sanctuary and learn about their habitat, how they hunt and their preferred prey.

**COST: \$260**



## VCE LEARNING PROGRAMS

### VCE Outdoor and Environmental Studies Masterclass (Day Program or Overnight Camp)

#### Unit 2: Discovering Outdoor Environments

##### Area of Study 1: Investigating Outdoor Environments

Students undertake a bushwalk to explore and gain an understanding of the characteristics of Narmbool's different natural and managed environments and how they are used. Students explore the historical uses of the land by the Indigenous people and conduct tests within a specific outdoor environment to explore the relationship between the biotic and abiotic factors in that area. Through discussion with Narmbool's farm management, students discover the unique features of Narmbool's landscape and how natural changes such as fire has effected the environment.

### VCE Outdoor and Environmental Studies Masterclass (Day Program or Overnight Camp)

#### Unit 3: Relationships with Outdoor Environments

##### Area of Study 1: Historical Relationships with Outdoor Environments

Students explore Narmbool's natural environment and investigate the way it has been used by Indigenous and non-Indigenous people throughout history. Students discuss how European settlement, the 1850s goldrushes and environmental movements over time have affected our natural environment and its unique flora and fauna.

### VCE Environmental Science Masterclass (Day Program or Overnight Camp)

#### Unit 1: How are Earth's dynamic systems interconnected to support life?

##### Area of Study 2: How are Earth's systems organised and connected?

Students undertake a fieldwork investigation along one marked transect, allocating the random placement of three 1m x 1m quadrats and one 10m x 10m quadrat to determine the environmental conditions and explain the range of biotic/abiotic components. From the investigation, students examine the Narmbool food chain and its interrelationships that exist within the ecosystem; recognise how various adaptations enhance the survival of individual organisms and analyse the factors that affect the distribution and population size of individual species.

### Tertiary Learning Program Overview:

We support the education and development of tertiary students by providing a range of learning experiences that connect to either the development of skills or knowledge and understanding.

**We are pleased to work with Universities and TAFE's to design a program that meets the needs of your students in the areas of Research, Archaeology, Sustainability, Environmental Science, Education and Pre-Service Teachers.**

## DAY VISIT PROGRAM EXAMPLES

### Sustainability Day - Level 5 - 8 (4 hours)

Students explore the environment to determine the biodiversity of the area and determine factors which may impact this through identified testing and data collection.

#### Activity Options:

Aquatic Sampling      Water and Soil Testing  
Wonderful World of Worms  
Planting and/or propagating (seasonal)

#### Victorian Curriculum Links

- Science
- Geography
- Critical & Creative Thinking Capability
- Personal & Social Capability

### Aboriginal Day - Level 5 - 8 (4 hours)

Students explore the history of Wadawurrung land to understand the connection between people and place at Narmbool, learning about the history of storytelling, plants and food.

#### Activity Options:

Scats & Skulls      Indigenous Garden Discovery  
Aboriginal Games      Aboriginal Painting and Puzzle

#### Victorian Curriculum Links

- History
- Geography
- Intercultural Capability
- Personal & Social Capability
- Ethical Capability



## CAMP PRIMARY PROGRAM EXAMPLE

DAY ONE	Group 1	Group 2
11.00	Arrive at Narmbool – Orientation and Safety briefing	
11.30	BYO Morning Tea at Narmbool Lodge	
11.45	Team Games	Narmbool Challenge
1.00	BYO Lunch at Narmbool Lodge	
1.30	Narmbool Challenge	Team Games
2.45	Toilet & drinks break	
3.00	Critter Hunt	
4.30	Afternoon Tea at Narmbool Lodge	
4.45	Settle into rooms and personal time	
5.45	Duty Group report to the kitchen	
6.00	Evening meal at Narmbool Lodge	
7.30	Meet the Beaks with Martin Scuffins	
-	Supper at Narmbool Lodge	

DAY TWO	
7.45	Duty Group report to the kitchen
8.00	Breakfast at Narmbool Lodge
9.00	Room Inspections & bags on the front deck
9.15	Indigenous Education session with Emma Leehane
10.15	Morning Tea at Narmbool Lodge
10.30	Aboriginal Games
11.45	Create a Critter
1.00	Lunch at Narmbool Lodge
1.30	Pack the Bus
1.45	Farewells & Depart Narmbool



## EXCURSION & CAMP PRICING

Using the camp costs budgeting column you can generate indicative camp cost. This is not an approved costing until it is generated by Sovereign Hill as many factors inform your final invoice.

### Planning notes:

- No GST on Entry - all other costs GST inclusive
- ALL visitors (students & adults) pay for accommodation and catering.
- Use your student numbers to budget for education programs and experiences, calculate this at either an individual or group minimum price rate.
- Teacher/adult ratios are Free of Charge based on your overall student group size.
- The Sovereign Hill School and Sovereign Hill Museum invoice separately for the Costumed School Program.
- Prices subject to change.

<b>Sovereign Hill Outdoor Museum Entry - per person</b> (student, teacher, adult)	Price	Quantity	Camp Costs
<b>Student Entry - One-day Ticket</b>	\$25		
<b>Student Entry - Multi-day Ticket</b>	\$35		
<b>Teacher Entry Free of Charge Camp Ratio</b>	1:10		
<b>Teacher Entry Free of Charge Day Excursion Ratio</b>	1:20		
<b>Accompanying Adult Entry Price</b> (when attending with a school group)	\$25		
<b>Tertiary Entry Price</b>	\$32		
<b>AURA Ticket Price -</b> (Student & Adults above 1:10 ratio)	\$24		
<b>AURA Ticket Free of Charge Ratio</b>	1:10		
<b>Evening Theatre Show - 50+ Students</b>	\$10		
<b>Evening Theatre Show Minimum Group Charge - &lt; 50 students</b>	\$500		
<b>Evening Theatre Show Free of Charge Ratio</b>	1:10		

### Sovereign Hill and Collections Learning Programs

<b>Education Session &lt; 20 group</b> (min. group charge)	\$100		
<b>Education Session 20+ students</b>	\$5 pp		
<b>Education Session VCE Masterclass &lt; 12</b> (min. group charge)	\$120		
<b>Education Session VCE Masterclass 12+ students</b>	\$10 pp		
<b>Virtual Ed Session up to 50 students</b>	\$120		
<b>Virtual VCE Session up to 30 students</b>	\$150		

### Costumed School 2 Day Experience (School and Museum invoice schools separately)

<b>Costumed School Program - 2 days</b> (\$26 invoiced school & \$29 museum)	\$55		
<b>Costumed School 2 day Program plus Museum entry</b> (3 day camp)	\$80		

### Sovereign Hill Outdoor Museum Experiences subject to availability

<b>Underground Mine Tour</b>	\$4.50		
<b>Coach Ride</b>	\$4		
<b>Candle Dipping - smooth</b>	\$5		
<b>Candle Dipping - lumpy</b>	\$6		
<b>Anti-Chinese League Meeting</b>	\$100		

\*The costume school program is booked through the Sovereign Hill School, visit page 8.

<b>Sovereign Hill Hotel</b>	Price	Quantity	Camp Costs
<b>Accommodation – 1 Night Stay</b>	\$40		
<b>Linen Hire</b>	\$15		

Visitors to supply own sheet, pillowcase, sleeping bag and towel if not hiring linen.

#### **PRG Catering Outdoor Museum**

<b>Camp Package</b>	\$67		
<b>Upgrade Package Cooked Breakfast</b> (Add to package price per person)	\$6		
<b>Upgrade Package Sit Down Lunch</b> (Add to package price per person)	\$5		
<b>Upgrade Package Antipasto Platter Dinner</b> (Add to package price per person)	\$5		
<b>Teacher/Adult Coffee Card</b> (per person - per day)	\$9		

#### **Outdoor Museum Individual Catering Items Prices - per person**

<b>Continental Breakfast</b>	\$13		
<b>Cooked Breakfast</b>	\$19		
<b>Morning Tea</b>	\$5		
<b>Afternoon Tea</b>	\$5		
<b>Lunch</b>	\$17.50		
<b>Dinner</b>	\$26.50		
<b>Supper</b>	\$5		

#### **Narmbool Learning - Day Excursions**

<b>VCE Program</b>	\$35 pp		
<b>Narmbool VCE Program</b> (min. group charge) < 12	\$420		
<b>Narmbool Program Student Day Visit</b>	\$20 pp		
<b>Program &lt; 20 group Day</b> (min. group charge)	\$400		
<b>Narmbool Camp Program</b>	\$40 pp		

#### **Narmbool Lodge**

<b>Accommodation – 1 Night Stay</b>	\$45		
<b>Linen Hire</b>	\$15		

Visitors to supply own sheet, pillowcase, sleeping bag and towel if not hiring linen.

#### **PRG Catering Narmbool**

<b>Camp Package</b>	\$77		
<b>Upgrade Cooked Breakfast</b> (Add to package price per person)	\$9		
<b>Upgrade Package Antipasto Platter Dinner</b> (Add to package price per person)	\$5		

#### **Narmbool Individual Catering Item Prices - per person**

<b>Continental Breakfast</b>	\$17		
<b>Cooked Breakfast</b>	\$26		
<b>Morning Tea</b>	\$5		
<b>Afternoon Tea</b>	\$5		
<b>Lunch</b>	\$17.50		
<b>Dinner</b>	\$30		
<b>Supper</b>	\$5		
<b>Antipasto Platter</b>	\$5		
	<b>TOTAL =</b>		

## SUGGESTED ITINERARIES OUTDOOR MUSEUM:

Refer to map on page 6 for additional activities.

Itineraries below require Museum Entry.

Prices are subject to change and will be confirmed on confirmation of your booking.

Visit Length	Activities
<b>3 hours</b>	<ul style="list-style-type: none"> <li>• Explore the museum</li> <li>• Education session</li> <li>• Gold Pour demonstration</li> <li>• Red Hill Mine tour</li> <li>• Gold panning</li> </ul>
<b>Package Price (subject to change) \$30 (entry &amp; standard Ed Session)</b>	
<b>4- 5 hours</b>	<ul style="list-style-type: none"> <li>• Explore the museum</li> <li>• Education session</li> <li>• Self-guided tours</li> <li>• Gold Pour demonstration</li> <li>• Red Hill Mine tour</li> <li>• Gold panning</li> <li>• Candle making demonstration</li> </ul>
<b>Package Price (subject to change) \$46 (entry &amp; standard Ed Session)</b>	
<b>Camp 1 – 4 days</b>	<ul style="list-style-type: none"> <li>• Explore the museum</li> <li>• Education session x2</li> <li>• Gold Pour demonstration</li> <li>• Coach ride</li> <li>• Red Hill Mine tour</li> <li>• Gold panning</li> <li>• Candle dipping</li> <li>• AURA – Sound-and-light show (evening experience)</li> <li>• Underground Mine tour (45 minutes) *</li> <li>• Confectionery demonstration</li> <li>• Evening theatre performance</li> <li>• Self-guided inquiry tours</li> </ul>
<b>Package Price (subject to change) \$92.50 (entry, activities &amp; standard Ed Session)</b> <b>+ 1 night - 2 day standard catering &amp; accommodation \$117</b> <b>+ 2 night - 3 day standard catering &amp; accommodation \$234</b>	

## SOVEREIGN HILL MUSEUM EXCURSION & CAMP ENQUIRY FORM

Please return the form to: [education@sovereignhill.com.au](mailto:education@sovereignhill.com.au)

### Contact Details

Name: \_\_\_\_\_

School: \_\_\_\_\_

Email: \_\_\_\_\_

Phone: \_\_\_\_\_ Mobile: \_\_\_\_\_

### Request Details

2023

2024

2025

I am interested in a:      Excursion      Camp      Evening (AURA only)

*The museum opens at 12pm on a Monday for booked schools*

Camp length:      1 night      2 nights      3 nights      4 nights

Preferred Term:      T1      T2      T3      T4      Arrival Time: \_\_\_\_\_      Departure Time: \_\_\_\_\_

Preferred Dates:      Preference 1: Arrive \_\_\_\_\_      Depart \_\_\_\_\_

Preference 2: Arrive \_\_\_\_\_      Depart \_\_\_\_\_

Preference 3: Arrive \_\_\_\_\_      Depart \_\_\_\_\_

### School Details

School Type:      Early Years      Primary      Secondary      Tertiary      Other: \_\_\_\_\_

Year Level:      Kinder      F      1      2      3      4      5      6      7

8      9      10      VCAL      VCE      VET

Numbers:      Students \_\_\_\_\_      Staff \_\_\_\_\_      Other \_\_\_\_\_

**MARK ALL ACTIVITIES OF INTEREST** (Activities are subject to availability) *\*Minimum group charges may apply*

Sovereign Hill Living Museum - PAID		Sovereign Hill Living Museum - FREE	
<input type="checkbox"/>	1 - Learning Program	<input type="checkbox"/>	Red Hill Mine Tour
<input type="checkbox"/>	2 - Learning Program	<input type="checkbox"/>	Gold Pour Demonstration
<input type="checkbox"/>	Costumed School Program (Pre booked with the Sovereign Hill School^)	<input type="checkbox"/>	Confectionery Demonstration
<input type="checkbox"/>	Quartz Mine Tour	<input type="checkbox"/>	Candle Dipping Demonstration
<input type="checkbox"/>	Evening AURA Sound & Light Show	<i>^The Costumed School Program is not available to schools who have not been confirmed by the Sovereign Hill School in the year prior.</i>	
<input type="checkbox"/>	Evening Theatre Show		
<input type="checkbox"/>	Candle Dipping Smooth Candle - \$5		
<input type="checkbox"/>	Candle Dipping Lumpy Candle - \$6		
<input type="checkbox"/>	Coach Ride		
<input type="checkbox"/>	Anti-Chinese League - ACL		

**Please email me the following pre-order retail forms:**

<input type="checkbox"/>	Ballarat Times
<input type="checkbox"/>	Blacksmiths
<input type="checkbox"/>	Sovereign Hill Shop

## NARMBOOL EXCURSION & CAMP ENQUIRY FORM

Please return the form to: [education@sovereignhill.com.au](mailto:education@sovereignhill.com.au)

### Contact Details

Name: \_\_\_\_\_

School: \_\_\_\_\_

Email: \_\_\_\_\_

Phone: \_\_\_\_\_ Mobile: \_\_\_\_\_

### Request Details

2023

2024

2025

I am interested in a:      Excursion      Camp

Camp length:      1 night      2 nights      3 nights      4 nights

Preferred Term:      T1      T2      T3      T4      Arrival Time: \_\_\_\_\_ Departure Time: \_\_\_\_\_

Preferred Dates:      Preference 1: Arrive \_\_\_\_\_ Depart \_\_\_\_\_

Preference 2: Arrive \_\_\_\_\_ Depart \_\_\_\_\_

Preference 3: Arrive \_\_\_\_\_ Depart \_\_\_\_\_

### School Details

School Type:      Early Years      Primary      Secondary      Tertiary      Other: \_\_\_\_\_

Year Level:      Kinder      F      1      2      3      4      5      6      7

8      9      10      VCAL      VCE      VET

Numbers:      Students \_\_\_\_\_ Staff \_\_\_\_\_ Other \_\_\_\_\_

Purpose of the visit: \_\_\_\_\_

**MARK ALL ACTIVITIES OF INTEREST** (Activities are subject to availability) *\*Minimum group charges may apply*

Narmbool Learning Themes		VCE Learning Programs	
<input type="checkbox"/>	Biodiversity	<input type="checkbox"/>	Outdoor and Environmental Masterclass Unit 2
<input type="checkbox"/>	Environmental Impact	<input type="checkbox"/>	Outdoor and Environmental Masterclass Unit 3
<input type="checkbox"/>	Sustainability	<input type="checkbox"/>	Environmental Science Masterclass Unit 1
<input type="checkbox"/>	Water	<input type="checkbox"/>	Other:
<input type="checkbox"/>	Citizen Science		
<input type="checkbox"/>	Aboriginal History		
<input type="checkbox"/>	Teambuilding		

### External Providers

<input type="checkbox"/>	Emma Leehane Aboriginal Culture Session
<input type="checkbox"/>	Meet the Beaks

Please email me a Sovereign Hill enquiry form as we will visit the outdoor museum as part of our camp.

## CONTACT US

---

**E** [schoolbookings@sovereignhill.com.au](mailto:schoolbookings@sovereignhill.com.au)

**P** 03 5337 1188

**Visit** [sovereignhill.com.au/excursion-booking](https://sovereignhill.com.au/excursion-booking)

**SOVEREIGN HILL EDUCATION IS SUPPORTED BY:**

